



GATEWAY HI-TECH

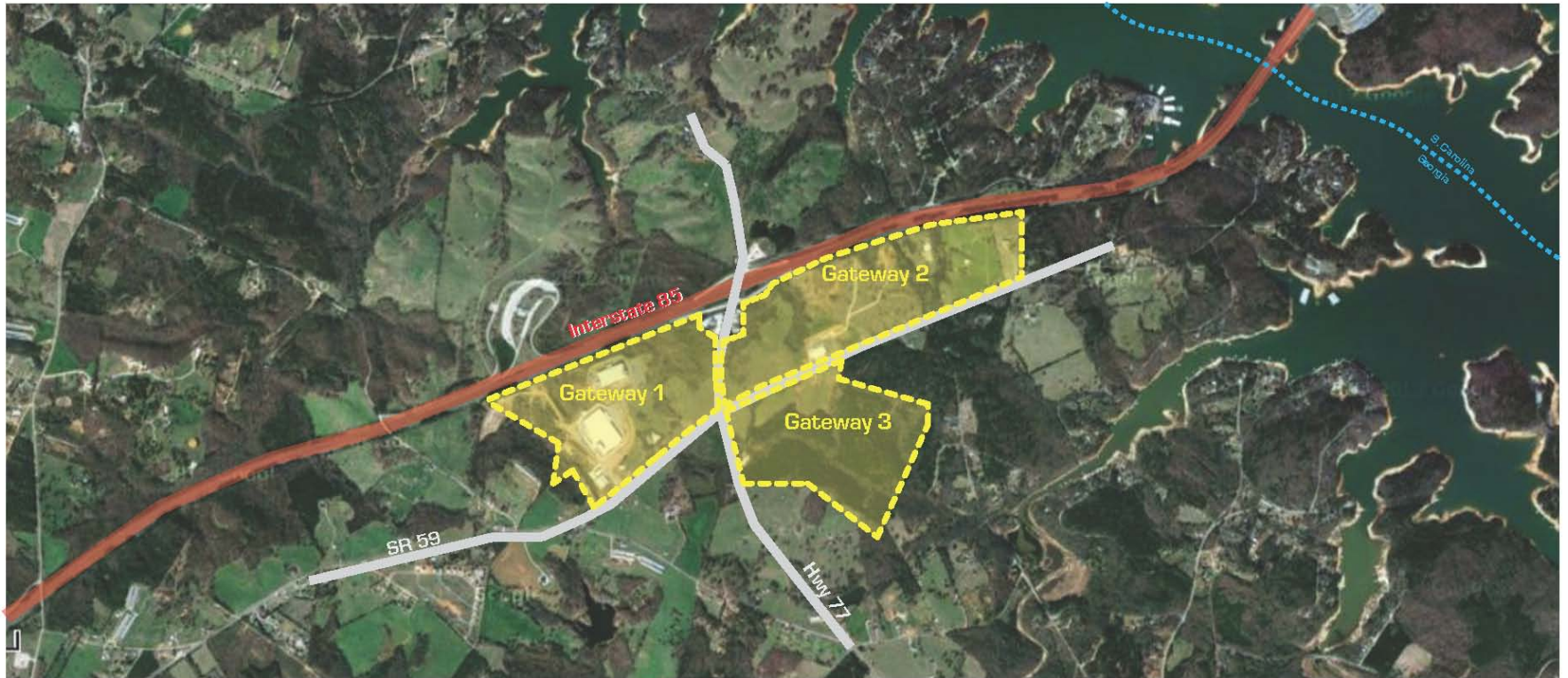
An Eco-Industrial Park



Archway Partnership

Designer: Megan Turner
Summer 2012

LOCATION



SITE VISIT

Facing East on SR 59 – Gateway 2



Facing West on SR 59



Existing Entry Sign – Gateway 1

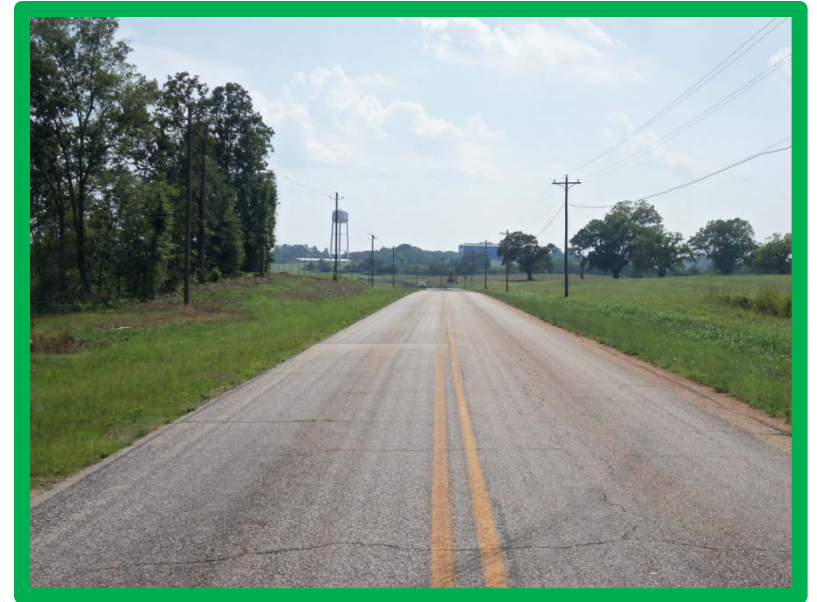
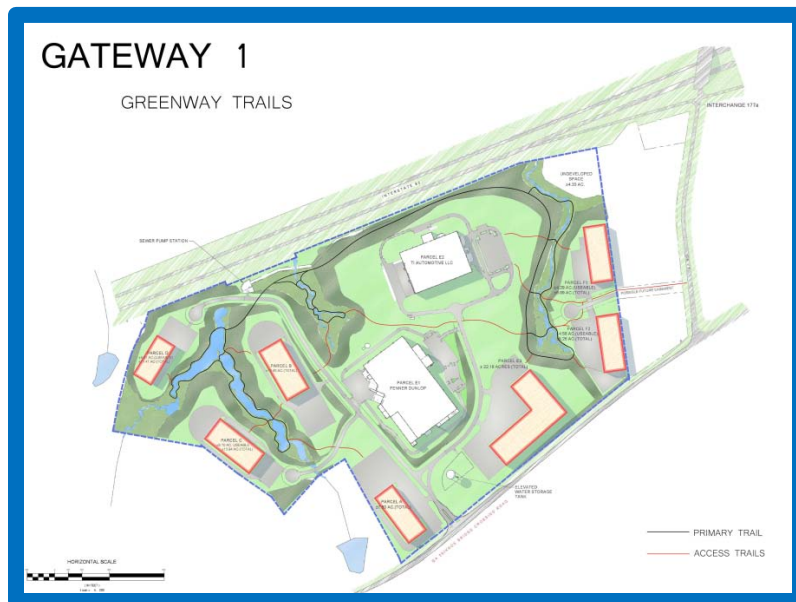


Business sign - Gateway 1

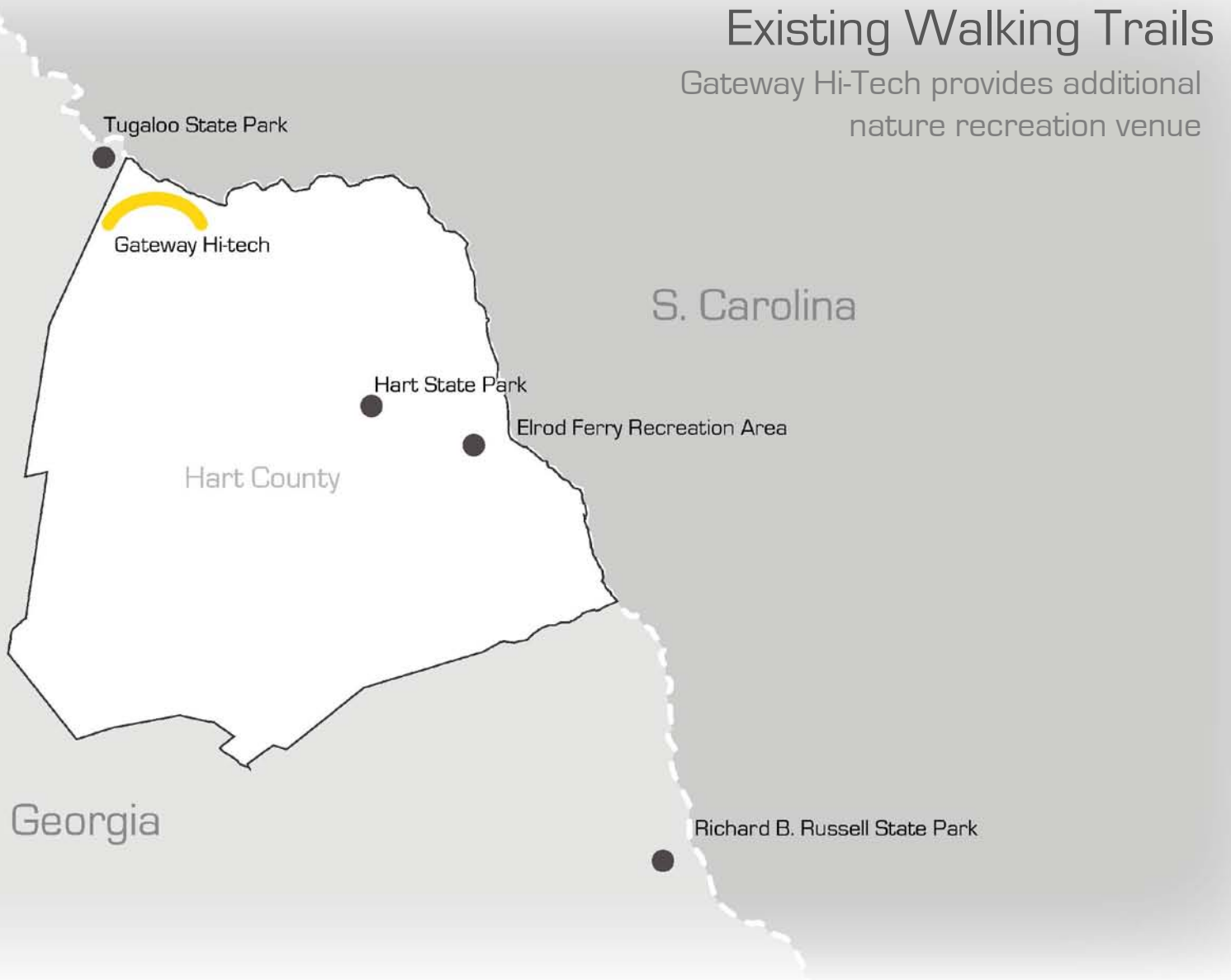


SITE PROGRAM

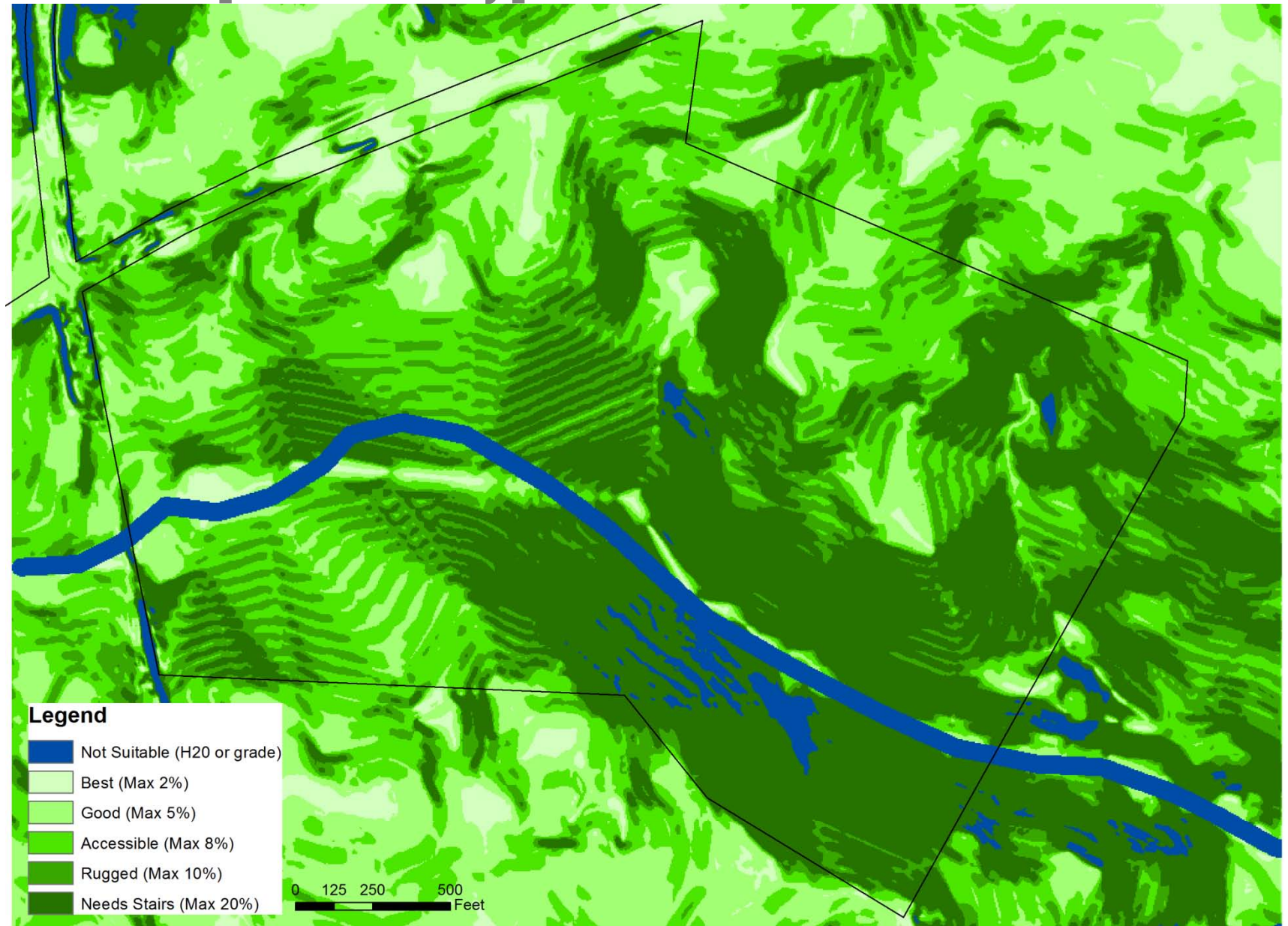
1. Trails for Gateway 3
2. Signage
3. Identity



Program 1: TRAILS



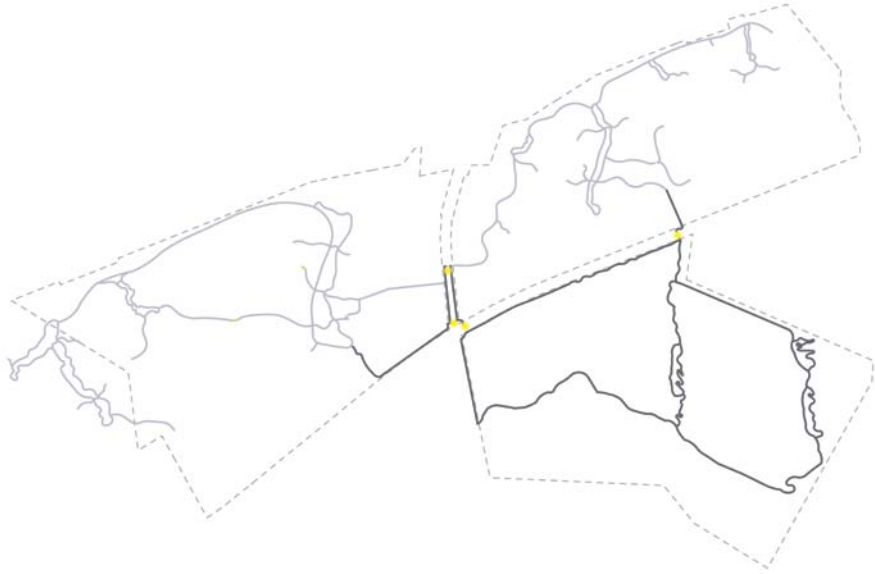
TRAILS [suitability]



TRAILS [gateway 3]

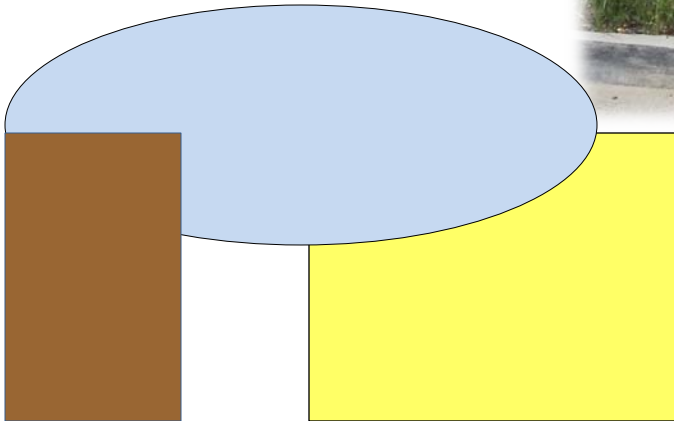


TRAILS [connectivity]



**Painted
Cross walks**
and
**pedestrian
islands** help to
connect walking
trails between
campuses

Program 2: SIGNAGE



Existing Sign provides form vocabulary

SIGNAGE [trails]

Design: Clean
Modern
Interpretive
Navigational

Materials: Stamped Metal
Wood
Paint



SIGNAGE [trails]

Where road meets trail...



Gateway:

Decorative Signs inform pedestrians they have crossed to new campus

Refuge:

The signs act as bollards and provide sanctuary from traffic

SIGNAGE [campus entry]



Improved [day]

Improvements:

- Base Color matches granite
- Font changed → hi-tech, legible
- Brushed metal
- Campus name, campus color
- Solar flood light



Improved [night]

SIGNAGE: [entry planting]

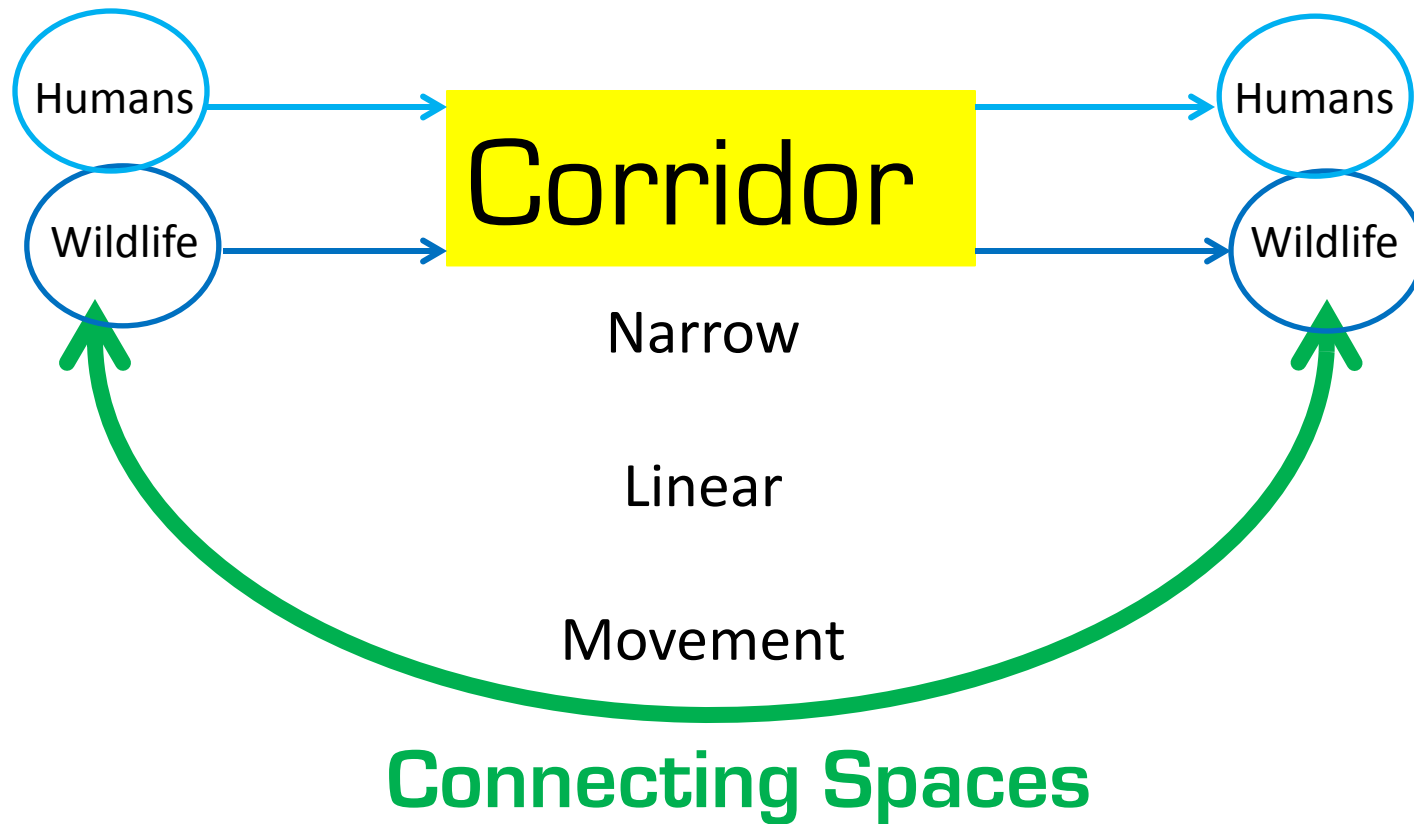


Planting Plan:

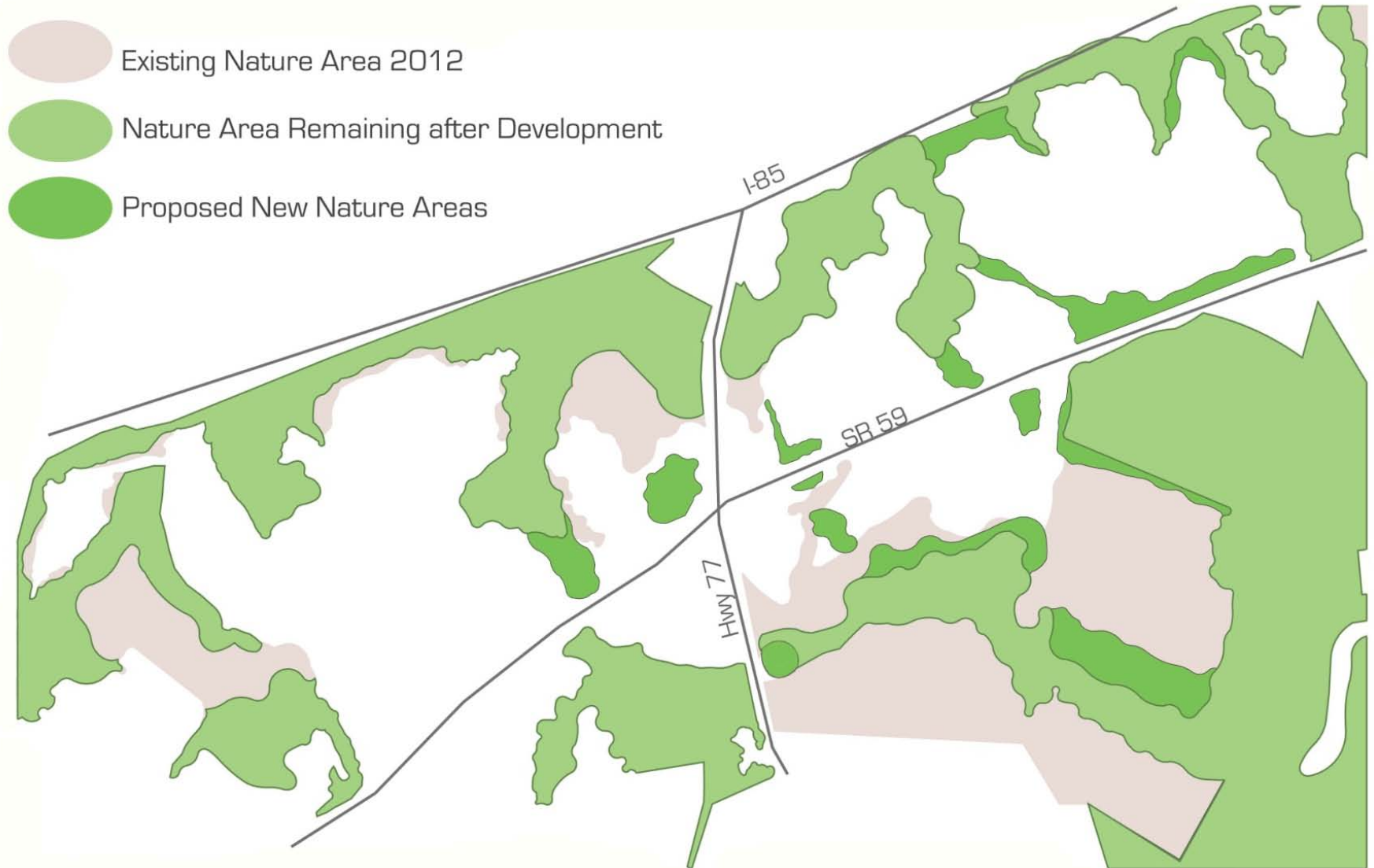
Low-Maintenance
Mostly Native
Evergreen
Durable



Program 3: IDENTITY



IDENTITY: [eco-industrial corridor]



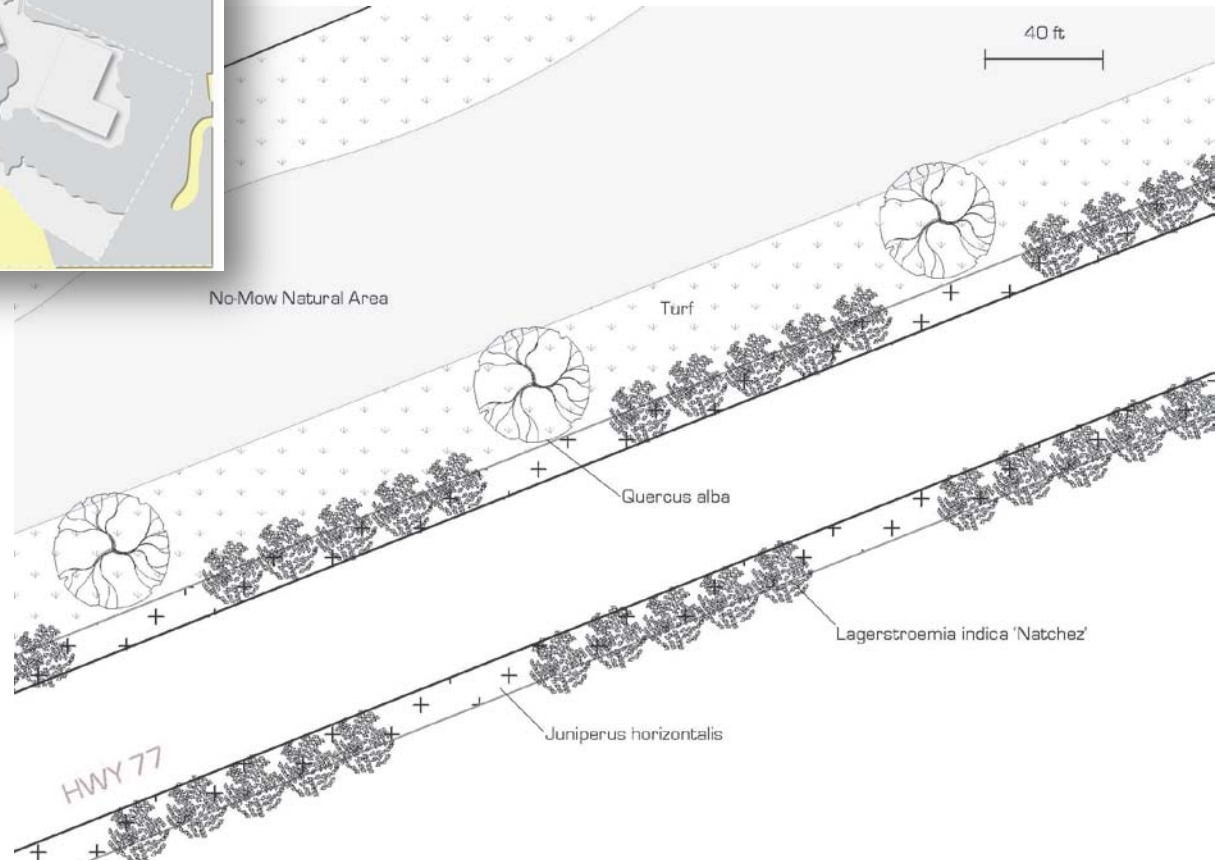
IDENTITY [corridor for industry]



Identity through visual connectivity

1. Industry: Crape Myrtle allée creates sense of arrival in formal space

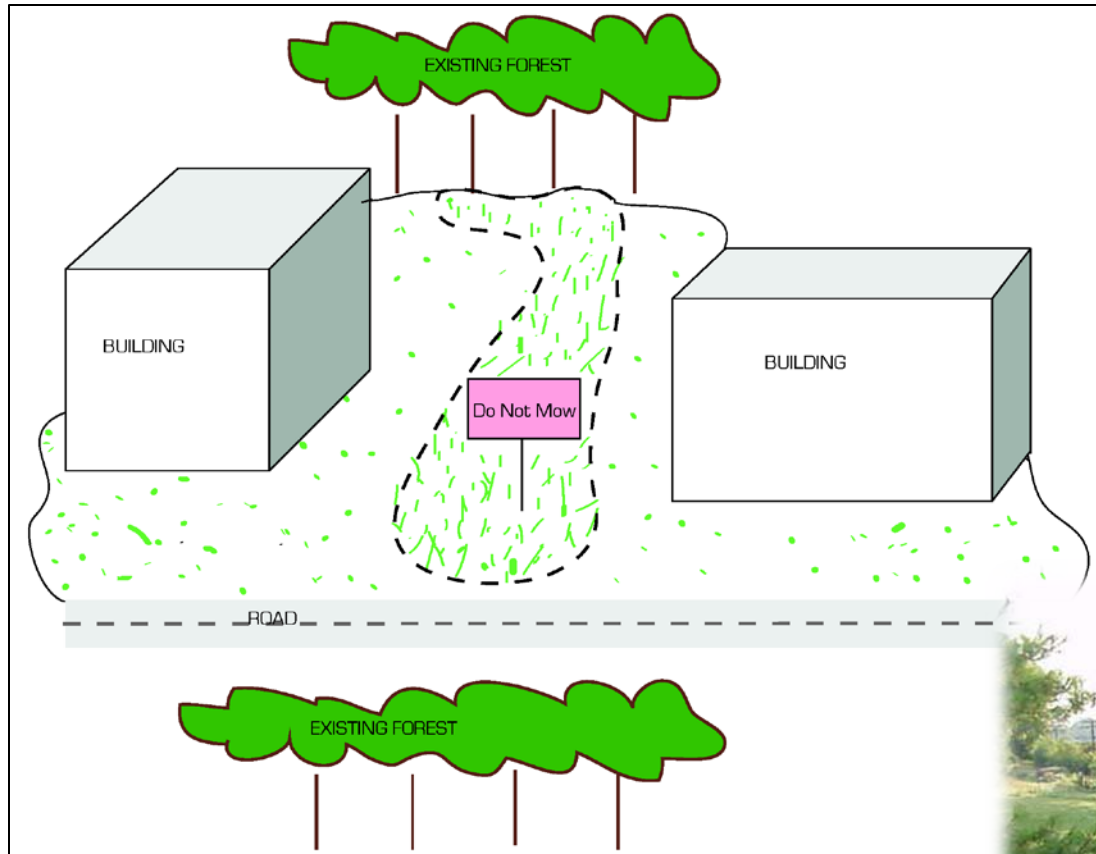
2. Nature: White Oaks mark location of re-established natural areas



IDENTITY [corridor for nature]



IDENTITY [new nature areas]

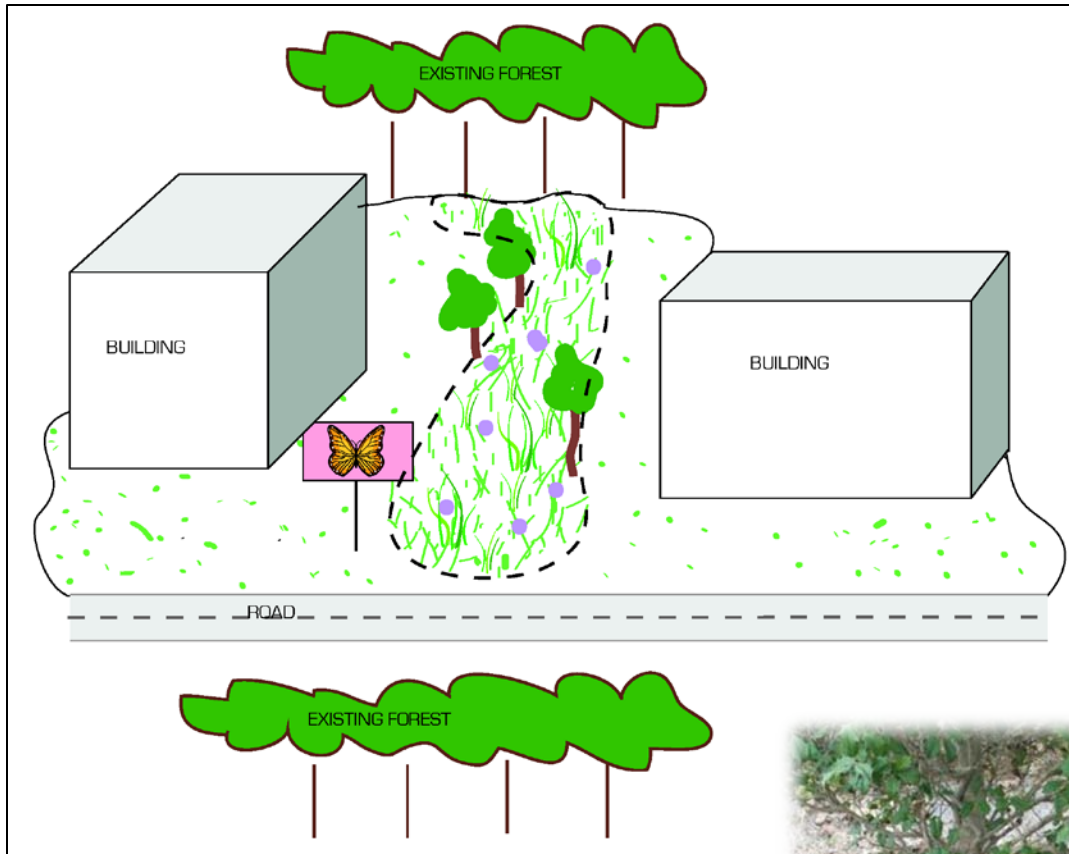


Step 1: No-Mow Areas

Delineate the new nature areas and simply stop mowing them. Native plants will begin to grow and add a new texture and color to the landscape.



IDENTITY [new nature areas]



Step 2: Add Plants

Add native grass/flower seeds.



Plant young native trees like Black Cherry at the perimeter to add visual interest. Trees can be purchased or transplanted from developing areas.

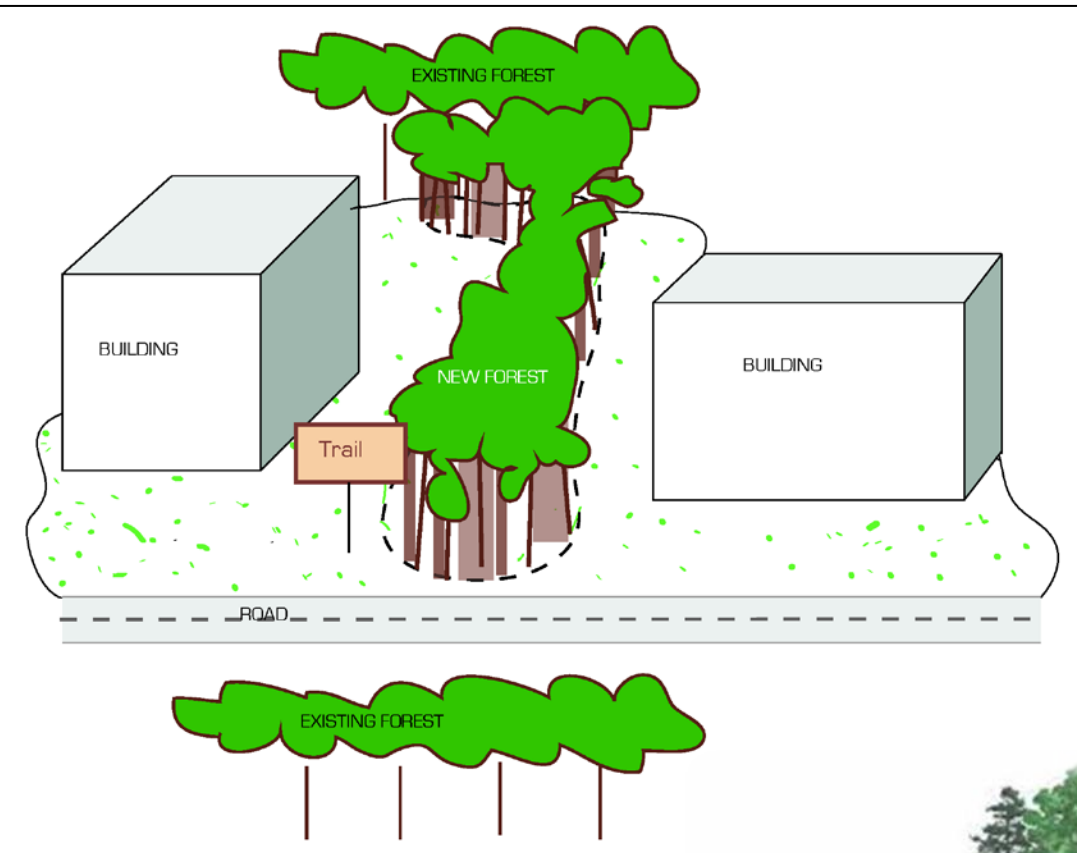
IDENTITY [new nature areas]

Step 3: Utilize

The natural areas can be left unmanaged, or can be used for further trail development.



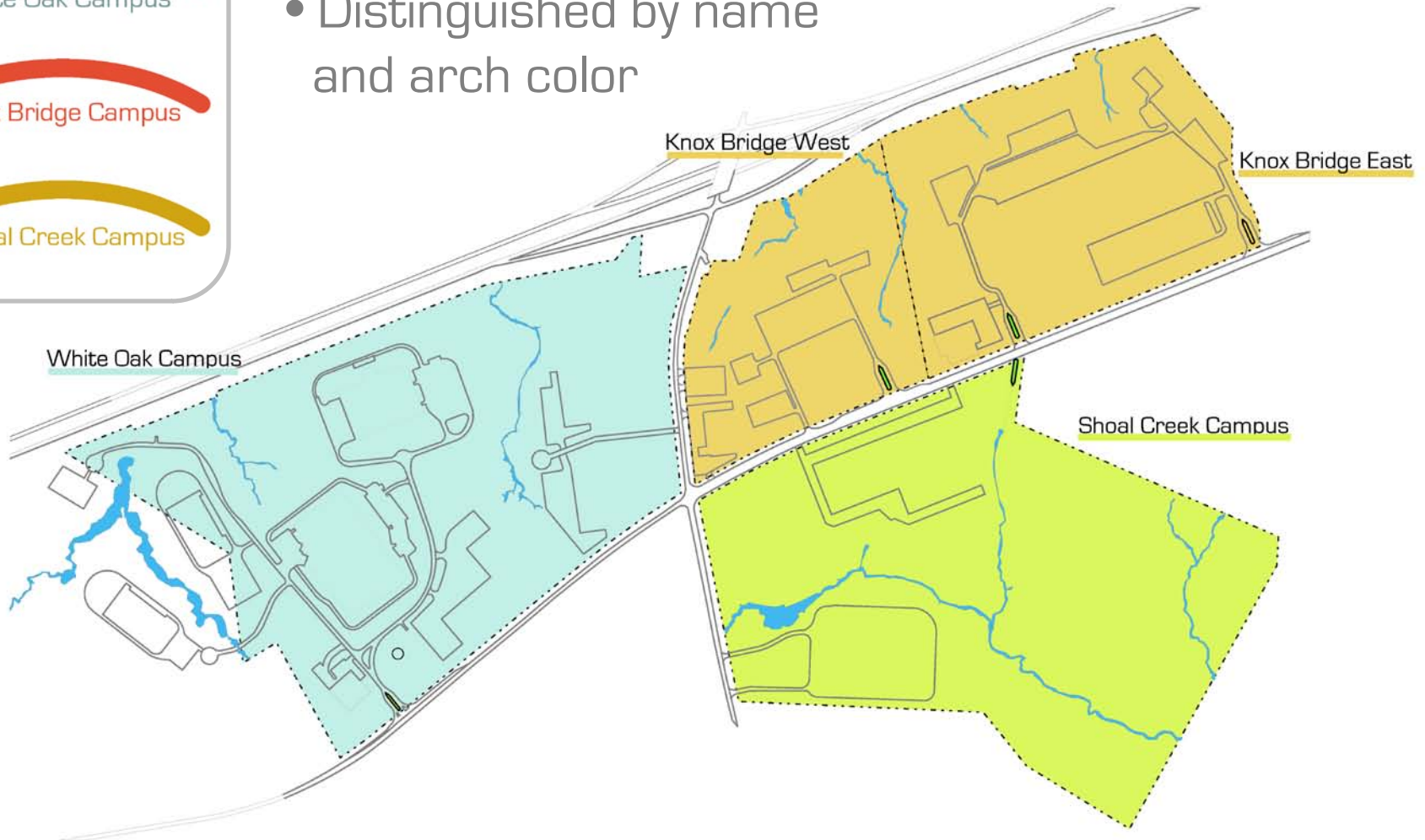
The natural areas will change over time from grasses to trees, but will always provide an attractive setting for the Industrial Park.



IDENTITY (campus concept)



- Unified by shape
- Distinguished by name and arch color



IDENTITY (master plan)



THANK YOU

With special gratitude:

Hart Co. Archway Partnership Executive Committee

Jon Caime, Hart County Administrator

Carol Harvey, Hart Co. GIS Specialist

Ilka McConnell, Archway Professional

Archway Partnership Program

Rachel Johnson, Archway Graduate Assistant